

HÄFELE



www.hafeleindia.com

PROLOCK - HOTEL SOLUTIONS

The Hafele hotel lock system replaces your old room keys with Keyless Access by utilizing international-standard Mifare and keycard technology. Feel secure with an Access Control System that allows you to integrate all of your own and your guest's security needs into one stylish, energy efficient and reliable package.





## HOTEL SOLUTIONS

---

### **A. Hotel management system map**

### **B. Hotel lock system**

1. System component
2. Specifications
3. Handle and Finish
4. Dimension
5. Article No. & Prices
6. Accessories

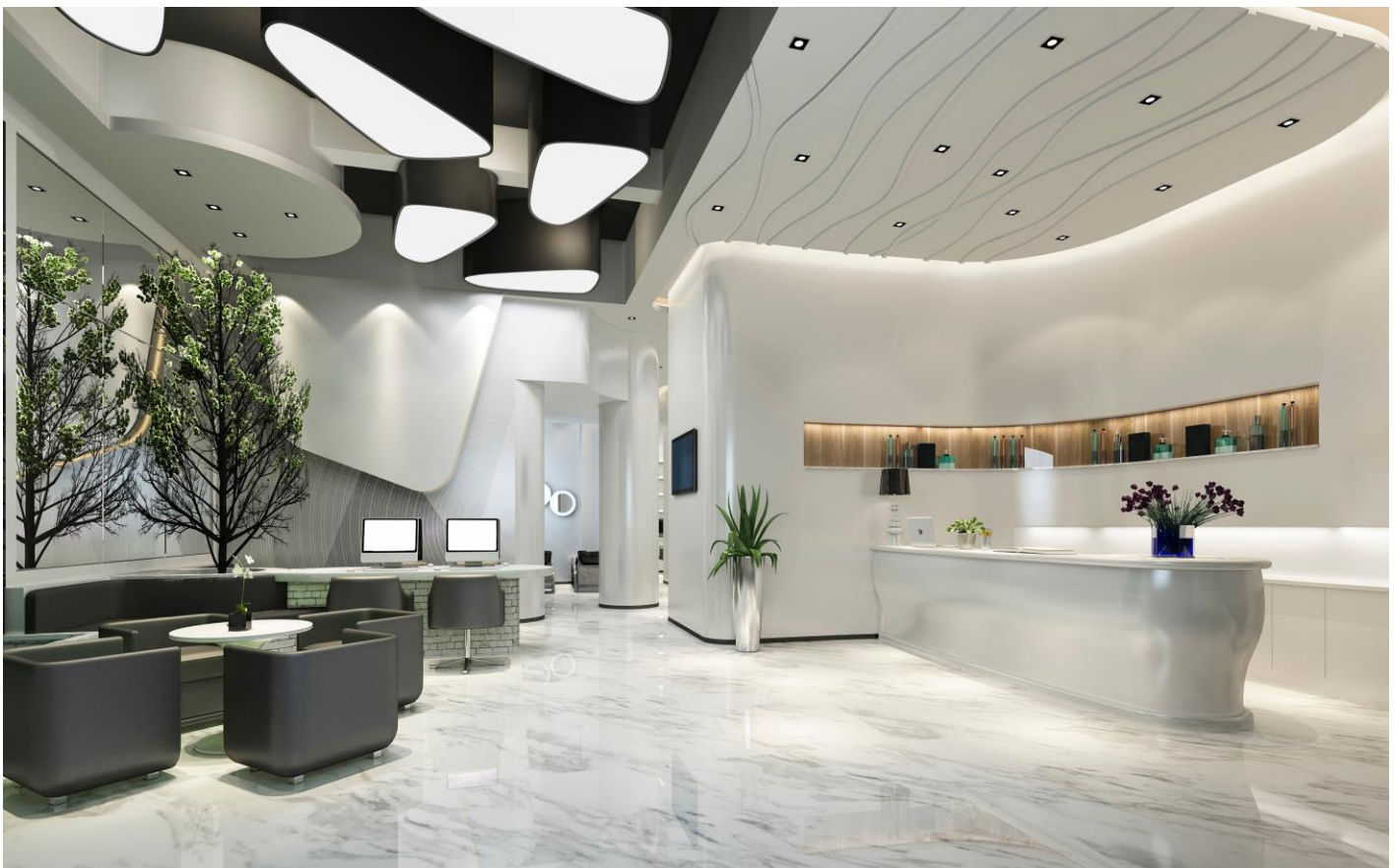
### **C. Elevator control system**

1. System component
2. Function
3. Connection diagram
4. Specifications

### **D. Access control system**

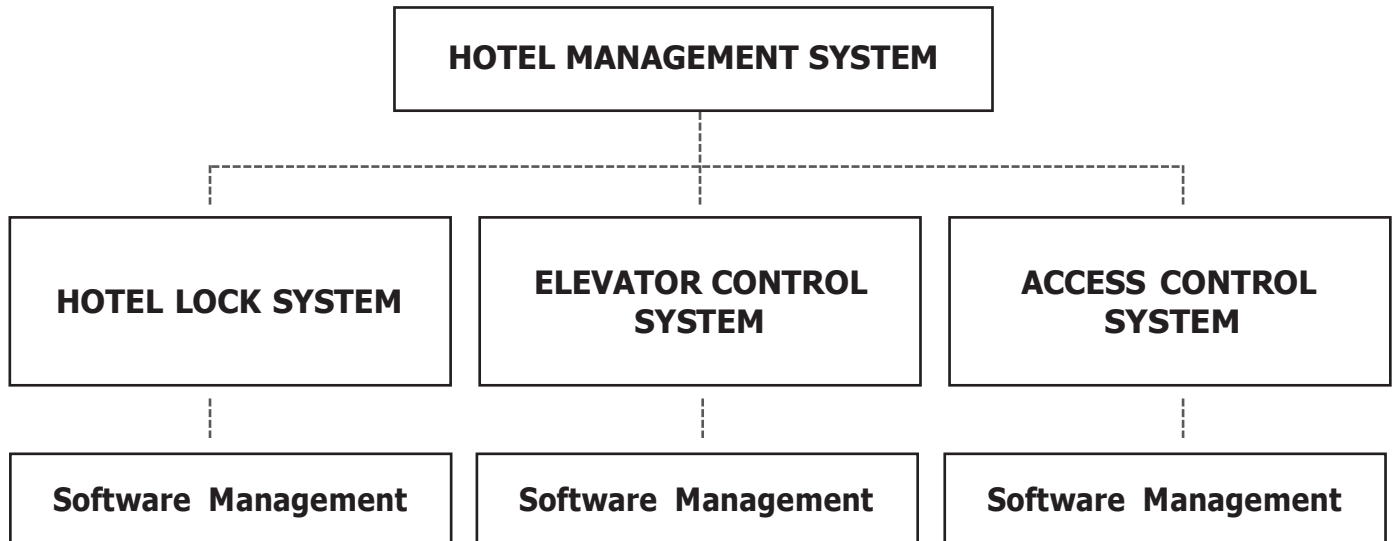
1. System component
2. Function
3. Connection diagram
4. Specifications

### **E. Hotel management software**



## HOTEL SOLUTIONS

### HOTEL MANAGEMENT SYSTEM MAP



- > One hotel management system include 3 parts: hotel lock system, access control system and elevator control system. These 3 systems are managed by one software and each customer can verify for all these system by using just one check-in card.



## HOTEL SOLUTIONS

---

### HOTEL LOCK SYSTEM

#### System Component

#### OFFLINE SYSTEM



Hotel lock



PDA



Encoder



Card



Software

## HOTEL SOLUTIONS

### HOTEL LOCK SYSTEM

PL200



#### Features

- > Material: SUS 304
- > Door thickness: 40~60 mm (for 45~60 mm need additional mounting set)
- > Power supply: 4 pcs AA alkaline
- > Record storage: 830 records
- > Working temperature: 0°C - 70°C
- > Working humidity: 10% - 90%
- > Optional mechanical key

#### Specifications

- > 3 types of available handle: E,D,H
- > 3 types of finish: satin, gold, black matt
- > Comes with profile cylinder, can easily carry-out the master key customisation
- > Unlocking methods: MF card (13.56MHz), mechanical key and Bluetooth (Optional)
- > The alarm feature of the lock will set-off in case of low-battery or invalid card
- > Supported system: Offline and Bluetooth

#### Handles and Finishes

##### 3 types of available handles



E lever handle



D lever handle



H lever handle

##### 3 types of finishes



Satin



Gold

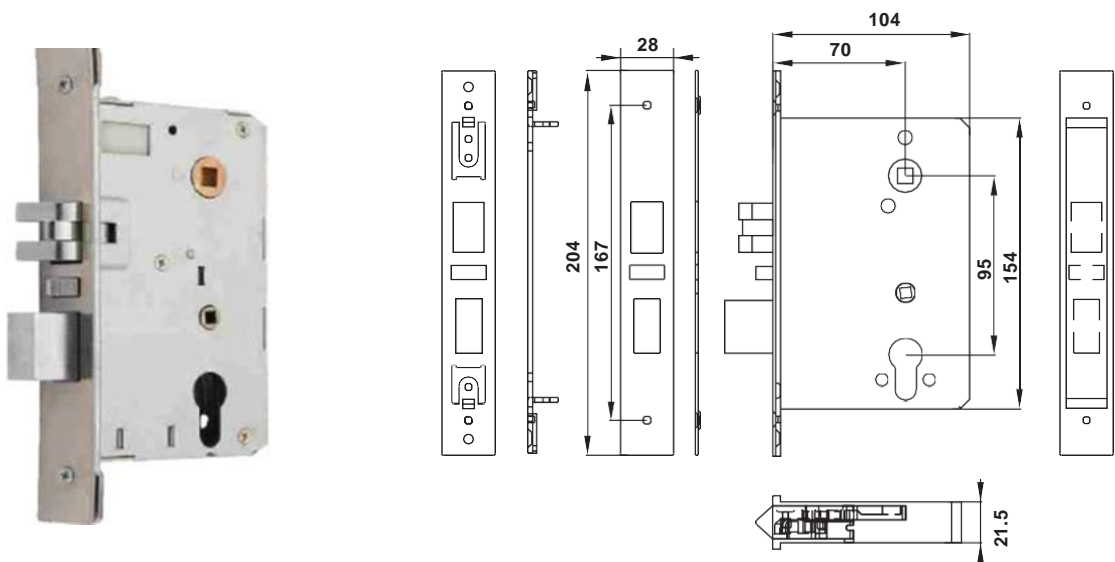
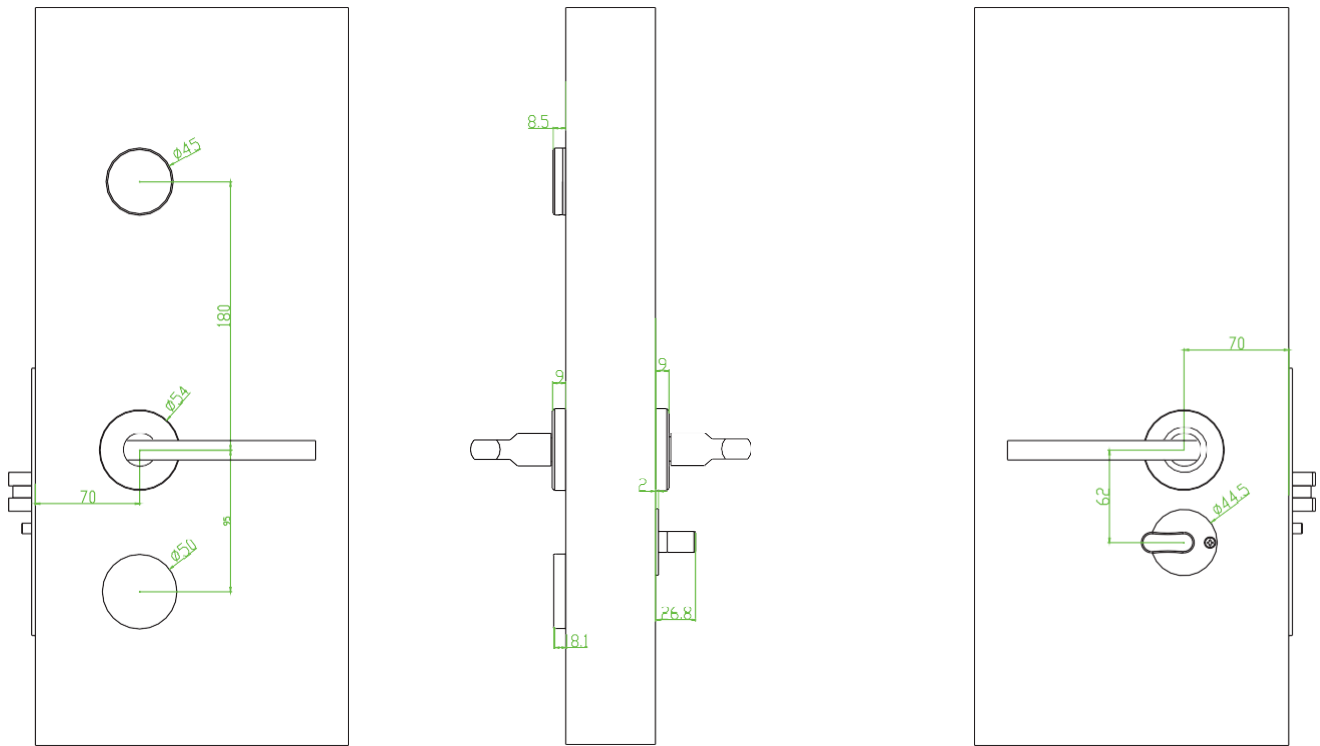


Black Matt

## HOTEL SOLUTIONS

### HOTEL LOCK SYSTEM

PL200





## HOTEL SOLUTIONS

### HOTEL LOCK SYSTEM

#### PL200

PL 200 - Offline and Bluetooth System						
Type	Finish	Handle	DIN	Offline	Bluetooth	
PL200	Satin Finish	E Lever Handle	DINL	<b>912.20.154</b>	<b>912.20.341</b>	
			DINR	<b>912.20.155</b>	<b>912.20.342</b>	
		D Lever Handle	DINL	<b>912.20.156</b>	<b>912.20.348</b>	
			DINR	<b>912.20.157</b>	<b>912.20.349</b>	
		H Lever Handle	DINL	<b>912.20.330</b>	<b>912.20.354</b>	
			DINR	<b>912.20.331</b>	<b>912.20.355</b>	
		Gold Finish	E Lever Handle	DINL	<b>912.20.162</b>	<b>912.20.344</b>
				DINR	<b>912.20.163</b>	<b>912.20.345</b>
			D Lever Handle	DINL	<b>912.20.164</b>	<b>912.20.350</b>
				DINR	<b>912.20.165</b>	<b>912.20.351</b>
			H Lever Handle	DINL	<b>912.20.332</b>	<b>912.20.356</b>
				DINR	<b>912.20.332</b>	<b>912.20.357</b>
	Black Matt Finish	E Lever Handle	DINL	<b>912.20.170</b>	<b>912.20.346</b>	
			DINR	<b>912.20.171</b>	<b>912.20.347</b>	
		D Lever Handle	DINL	<b>912.20.172</b>	<b>912.20.352</b>	
			DINR	<b>912.20.173</b>	<b>912.20.353</b>	
		H Lever Handle	DINL	<b>912.20.334</b>	<b>912.20.358</b>	
			DINR	<b>912.20.335</b>	<b>912.20.359</b>	

PL 200 - Euro Profile Cylinders and Accessories				
Type	Product Description	Finish	Material	Art No.
PL Series	Half Cylinder with 2 Keys - Keyed to Differ	Nature	Brass	<b>916.88.900</b>
	Half Cylinder with Keys as per customer requirement - Keyed Alike	Nature	Brass	<b>916.88.901</b>
	Guest Keycard Plain White - Mifare	White	Plastic	<b>912.20.013</b>

## HOTEL SOLUTIONS

### HOTEL LOCK SYSTEM

PL50



#### Features

- > Material: SUS 304
- > Door thickness: 40~60 mm (for 45~60 mm need additional mounting set)
- > Power supply: 4 pcs AA alkaline
- > Record storage: 830 records
- > Working temperature: 0°C - 70°C
- > Working humidity: 10% - 90%
- > Optional mechanical key

#### Specifications

- > 4 types of available handle: E ,D, H & K
- > 3 types of finish: satin, gold, black matt
- > Comes with profile cylinder, can easily carry-out the master key customisation
- > Unlocking methods: MF card (13.56MHz), mechanical key and Bluetooth (Optional)
- > The alarm feature of the lock will set-off in case of low-battery or invalid card
- > Supported system: Offline and Bluetooth

#### Handles and Finishes

##### 4 types of available handles



E lever handle



D lever handle



H lever handle



K lever handle

##### 3 types of finishes



Satin



Gold

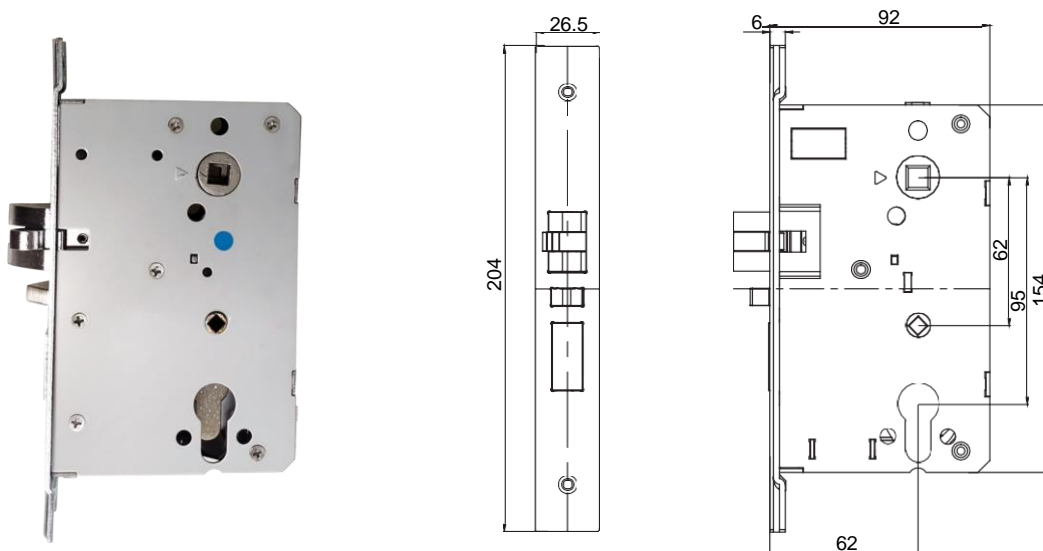
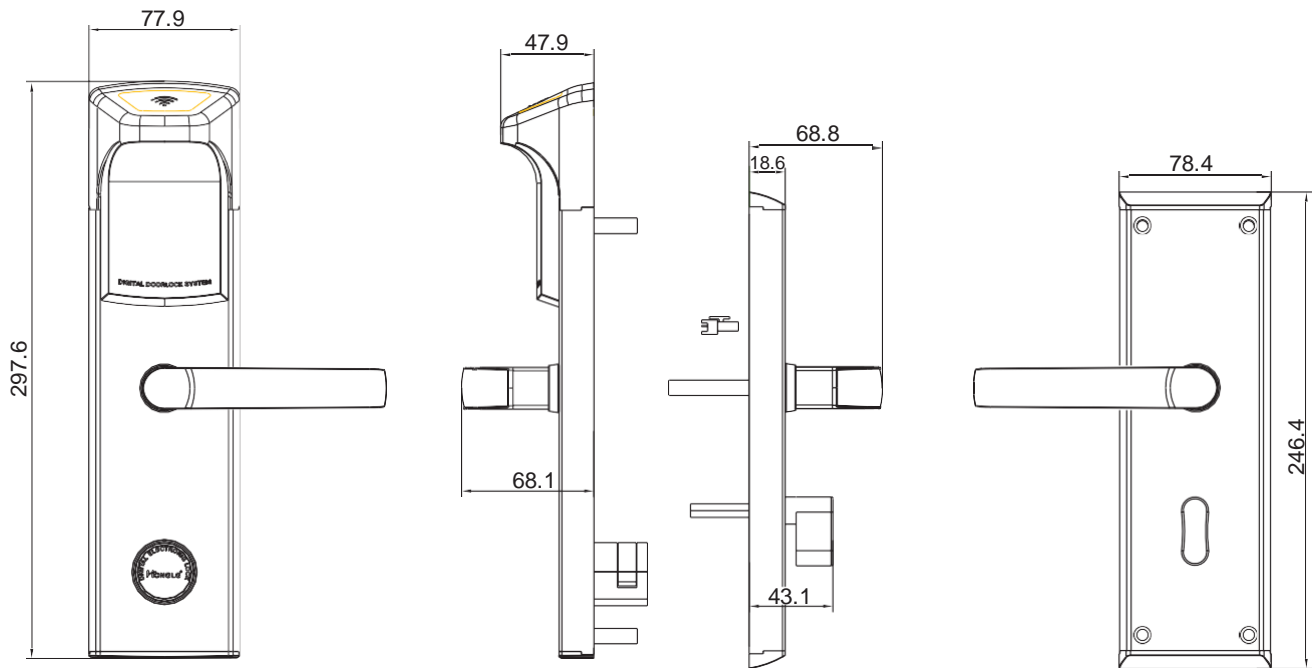


Black Matt

## HOTEL SOLUTIONS

## HOTEL LOCK SYSTEM

PL50



## HOTEL SOLUTIONS

### HOTEL LOCK SYSTEM

#### PL50

PL 50 - Offline and Bluetooth System						
Type	Finish	Handle	DIN	Offline	Bluetooth	
PL50	Satin Finish	E Lever Handle	DINL	<b>912.20.410</b>	<b>912.20.434</b>	
			DINR	<b>912.20.411</b>	<b>912.20.435</b>	
		D Lever Handle	DINL	<b>912.20.416</b>	<b>912.20.440</b>	
			DINR	<b>912.20.417</b>	<b>912.20.441</b>	
		H Lever Handle	DINL	<b>912.20.422</b>	<b>912.20.446</b>	
			DINR	<b>912.20.423</b>	<b>912.20.447</b>	
		K Lever Handle	DINL	<b>912.20.428</b>	<b>912.20.452</b>	
			DINR	<b>912.20.429</b>	<b>912.20.453</b>	
		Gold Finish	E Lever Handle	DINL	<b>912.20.412</b>	<b>912.20.436</b>
				DINR	<b>912.20.413</b>	<b>912.20.437</b>
			D Lever Handle	DINL	<b>912.20.418</b>	<b>912.20.442</b>
				DINR	<b>912.20.419</b>	<b>912.20.443</b>
	H Lever Handle		DINL	<b>912.20.424</b>	<b>912.20.448</b>	
			DINR	<b>912.20.425</b>	<b>912.20.449</b>	
	K Lever Handle		DINL	<b>912.20.430</b>	<b>912.20.454</b>	
			DINR	<b>912.20.431</b>	<b>912.20.455</b>	
	Black Matt	E Lever Handle	DINL	<b>912.20.414</b>	<b>912.20.438</b>	
			DINR	<b>912.20.415</b>	<b>912.20.439</b>	
		D Lever Handle	DINL	<b>912.20.420</b>	<b>912.20.444</b>	
			DINR	<b>912.20.421</b>	<b>912.20.445</b>	
		H Lever Handle	DINL	<b>912.20.426</b>	<b>912.20.450</b>	
			DINR	<b>912.20.427</b>	<b>912.20.451</b>	
		K Lever Handle	DINL	<b>912.20.432</b>	<b>912.20.456</b>	
			DINR	<b>912.20.433</b>	<b>912.20.457</b>	

PL 50 - Euro Profile Cylinders and Accessories				
Type	Product Description	Finish	Material	Art No.
PL Series	Half Cylinder with 2 Keys - Keyed to Differ	Nature	Brass	<b>916.88.900</b>
	Half Cylinder with Keys as per customer requirement - Keyed Alike	Nature	Brass	<b>916.88.901</b>
	Guest Keycard Plain White - Mifare	White	Plastic	<b>912.20.013</b>

## HOTEL SOLUTIONS

### ACCESSORIES

#### ENCODER



#### Features

- > Indicator light: yes
- > Material: metal compact
- > Dimension: 130 x 76 x 25 mm
- > Connection interface: USB port
- > Power: via USB port
- > Working temperature: 0°C - 50°C
- > Working humidity: 10%-70%
- > Programming Guest Check-in Cards and Staff Cards

Art.No.

**912.20.006**

#### PDA



#### Features

- > Connection interface: USB port
- > Dimension: 140 x 80 x 30 mm
- > Display size: 80\*65 mm touch screen
- > Power: 4 AAA batteries
- > Record storage:2000 records
- > Working temperature: 0°C - 50°C
- > Working humidity: 10%-70%
- > Transfer data from software to hardware such as: hotel lock, elevator controller and access controller.
- > Retrieve Access Record Logs

Art.No.

**912.20.007**

## HOTEL SOLUTIONS

---

### ELEVATOR CONTROL SYSTEM



## HOTEL SOLUTIONS

### ELEVATOR CONTROL SYSTEM

#### System component



Elevator Controller



Reader



Encoder



PDA



Card



Software

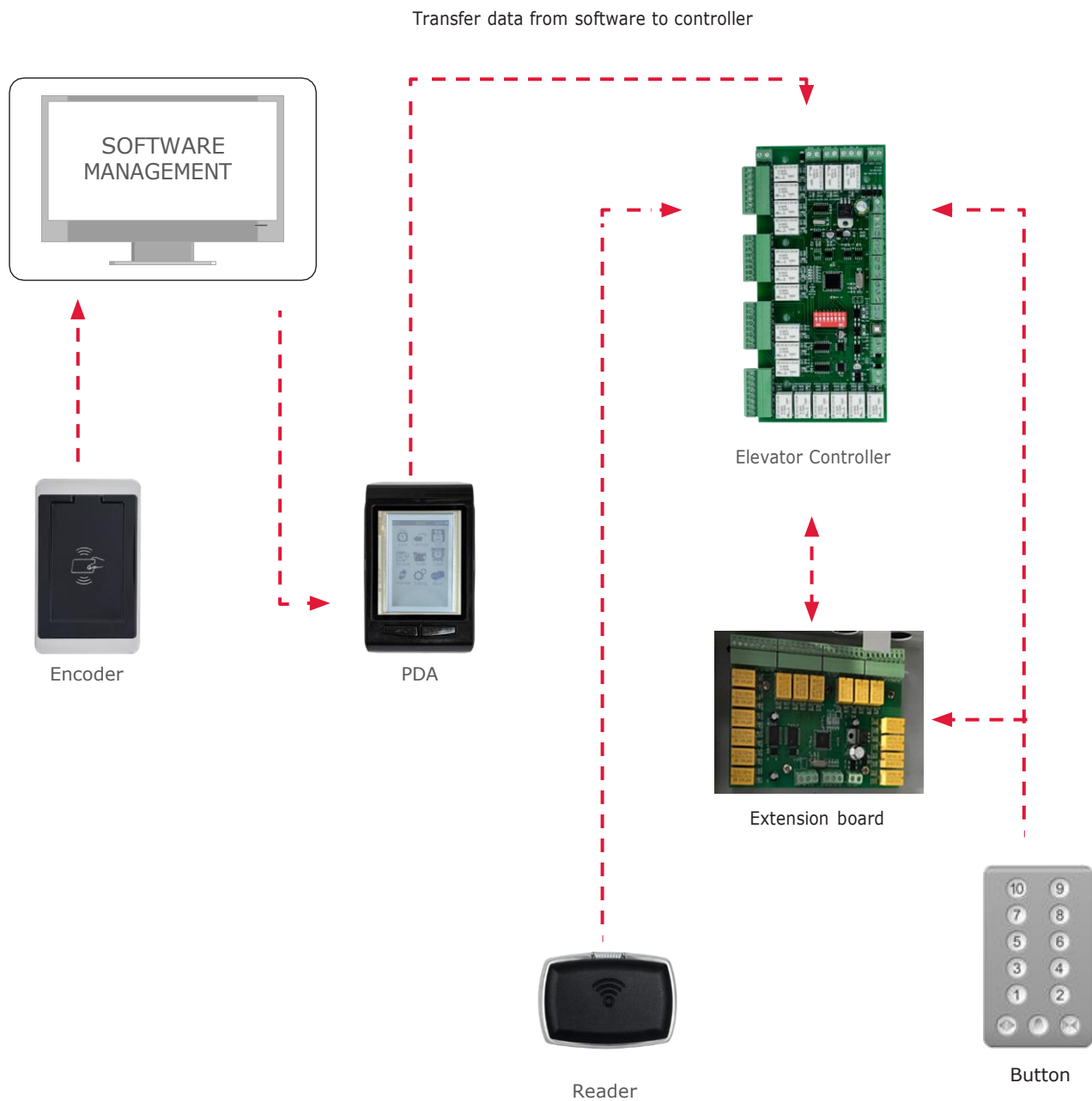
#### Function

- > Manage and grant specific guest/ admin access:
  - By floor: private and public floor
  - By time range within the day
  - By day of week (weekends/workday)



### ELEVATOR CONTROL SYSTEM

#### Connection diagram



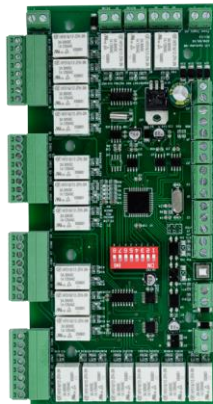


## HOTEL SOLUTIONS

---

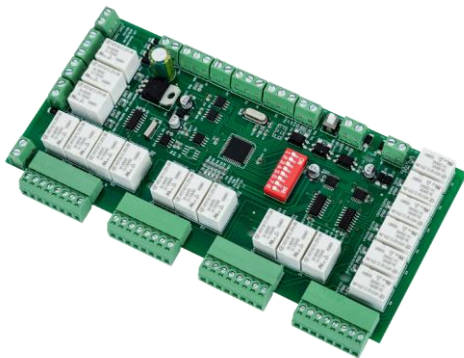
### ELEVATOR CONTROL SYSTEM

#### ELEVATOR CONTROLLER WITH 1 READER



#### Features

- > Floor control: 16 floors
- > Types of reader: RS485 reader
- > Types of card: MF - 13.56MHz
- > Lithium battery keeps memory and time setting for 5 years
- > Data retention during power cut-off - Upto 90 days
- > Power: DC12V - 400mA - 50W
- > Temperature: 0°C - 70°C
- > Humidity: 10 - 90%
- > In case of Emergency, Elevator control system will automatically turn-off



Art.No.

**912.20.009**

## HOTEL SOLUTIONS

---

### ELEVATOR CONTROL SYSTEM

#### ADDITIONAL READER



##### Features

- > Types of card: Mifare - 13.56MHz
- > Power: DC12V - 400mA - 50W
- > Temperature: 0°C - 70°C
- > Humidity: 10-90%

Art.No.

**912.20.025**

#### EXTENSION BOARD



##### Features

- > Floor control: 16 floors
- > Connect with elevator controller: maximum 7 boards
- > Lithium battery keeps memory and time setting for 5 years
- > Data retention during power cut-off - Upto 90 days
- > Power: DC12V - 400mA - 50W
- > Temperature: 0°C - 70°C
- > Humidity: 10 - 90%

Art.No.

**912.20.087**

## HOTEL SOLUTIONS

### ACCESS CONTROL SYSTEM

#### System component



Access Controller



Electric lock



Encoder



Exit button



PDA



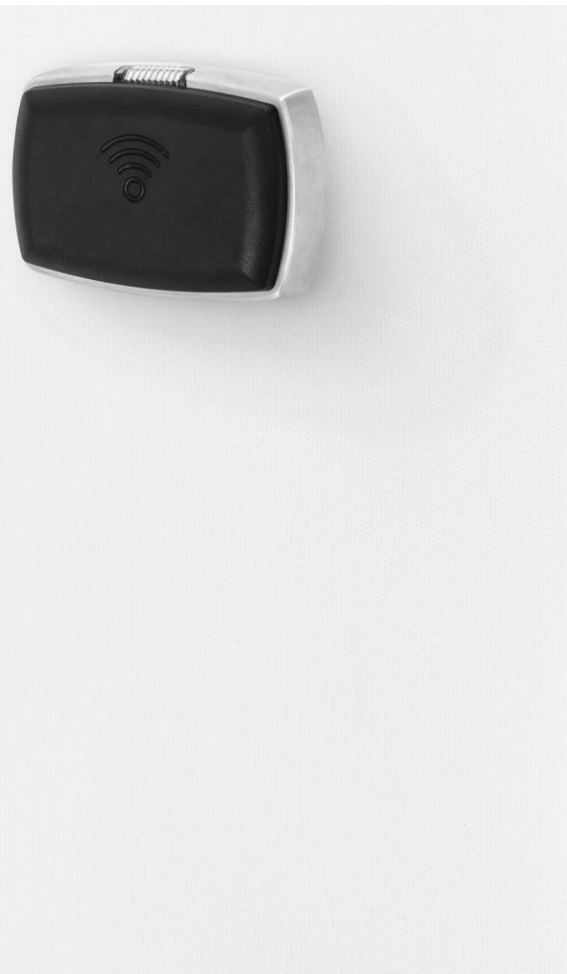
Card



Software

#### Function

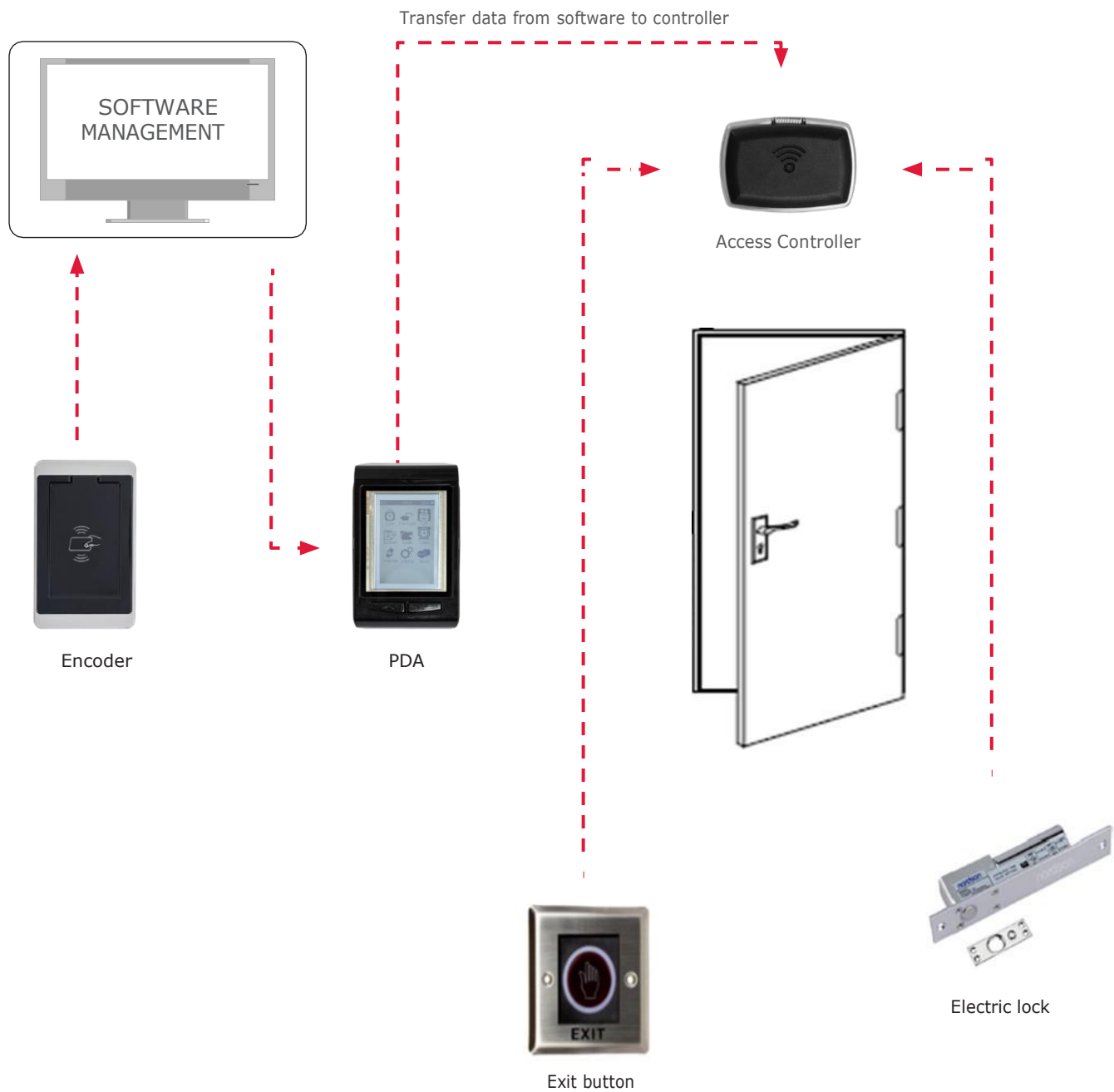
- > Manage and grant guest/ admin access:
  - By door: Common access areas like spa/ gym/ swimming area
  - By time range within the day
  - By day of week (weekends/workday)



## HOTEL SOLUTIONS

### ACCESS CONTROL SYSTEM

#### Connection diagram



## HOTEL SOLUTIONS

## ACCESS CONTROL SYSTEM

## ACCESS CONTROL SYSTEM



## Features

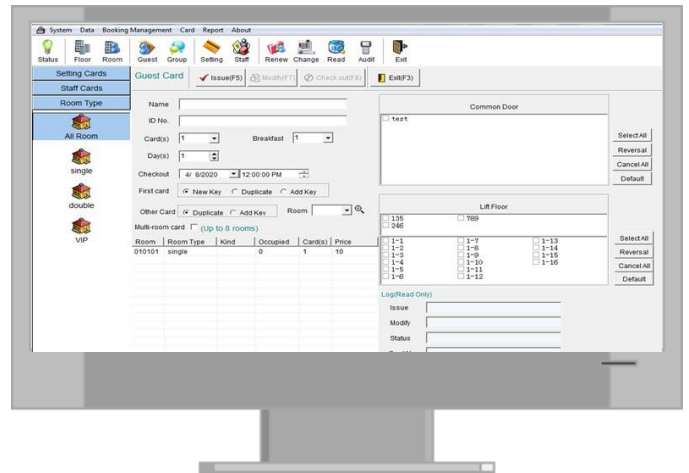
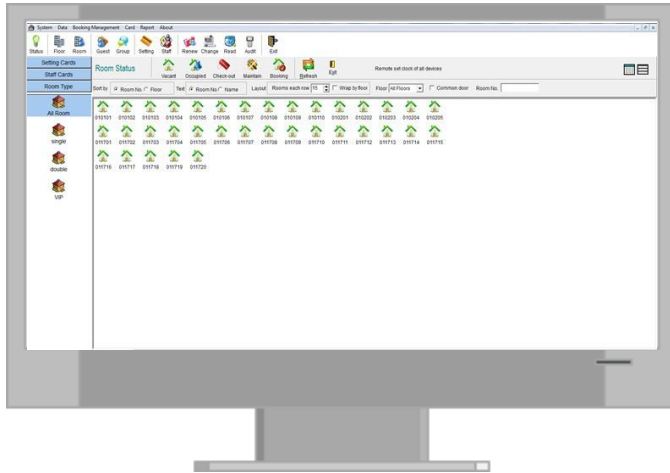
- > Door control: 1 door
- > Types of card: MF - 13.56MHz
- > Power: DC12V - 400mA - 50W
- > Temperature: 0°C - 70°C
- > Humidity: 10 - 90%
- > In case of emergency, Access Control System will automatically turn-off

Art.No.

**912.20.012**

## HOTEL SOLUTIONS

## HOTEL MANAGEMENT SOFTWARE



- All-in-one software, hotel lock system, elevator control system and access control system
- Manage unlimited rooms, elevator, door control device
- Set up access rights for guest follow the time zone & duration of stay
- Family function: one check-in card cans open for 8 rooms)
- Compatible with standard Mifare card 13.56Mhz
- Easily integrated with PMS system
- User-friendly software UI

